

**Short Communication**

**NEW RECORDS OF ROVE BEETLES (COLEOPTERA: STAPHYLINIDAE: PAEDERINAE) FROM UTTAR PRADESH, INDIA**

**INTRODUCTION**

The family Staphylinidae commonly known as Rove beetles is one of the largest family of the superfamily Staphylinoidea. The family is divided into 14 subfamilies of which members of the subfamily Paederinae can be easily distinguished by its head being more or less constricted behind. Major workers dealt the group are Motschulsky (1858), Fauvel (1895), Bernhauer (1915) etc. prior to Cameron’s work on the fauna of India Series (1930-1939).

The present study is based on the collection w.s.r. to the subfamily Paederinae brought from different districts of Uttar Pradesh by various survey parties of Zoological Survey of India. The collection of five species viz. 1. *Paederus atrocyaneus* Champ. 2. *Paederus birmanus* Fauv. 3. *Paederus pubescens* Cam. 4. *Paederus nigricornis* Bernh 5. *Paederus fuscipes* Curt. from Uttar Pradesh constitutes the new record from Uttar Pradesh.

**SYSTEMATIC ACCOUNT**

Family STAPHYLINIDAE

Subfamily Paederinae

Tribe Paederini

Genus *Paederus* Fab.

1775. *Paederus* Fab., *Syst. Ent.*: 268.

1931. *Paederus*: Cameron, *The Fauna of British India, incl. Ceylon & Burma* (Col.: Staphylinidae) 2: 33-63.

**Key to the species of the Genus Paederus recorded from Uttar Pradesh.**

- 1. Species entirely dark blue .....  
.....*atrocyaneus* Champ.
- Species bicolorous..... 2
- 2. Head black..... 3
- Head blue or blue black ..... 4
- 3. Species larger (8mm); last segment of antennae black..... *nigricornis* Bernhauer
- Species smaller (6.5-7mm); last segment of antennae concolorous .....*fuscipes* Curt.
- 4. Elytra blue,with whitish pubescence.....  
.....*birmanus* Fauv.
- Elytra blue-black with thick grey pubescence.....*pubescens* Cam.

1. *Paederus atrocyaneus* Champ. (Fig. 1)

1927. *Paederus atrocyaneus* Champion, *Ent. Month. Mag.*, 63: 50.



**Fig. 1.** *Paederus atrocyaneus* Champ

1931. *Paederus atrocyaneus*: Cameron, *The Fauna of British India, incl. Ceylon & Burma* (Col.: Staphylinidae) 2: 36-37.

1995. *Paederus atrocyaneus* Biswas & Biswas, *Zoological Survey of India, State Fauna Series 3, Fauna of West Bengal*, part 6(A): 274.

1895. *Paederus birmanus* Fauvel, *Rev. d'Ent.* **14**: 233.

*Material examined*: 2 exs., Dudhwa National Park, Lakhimpur-Kheri, 22.xi.2011, V.D. Hegde and party coll, ex. "Under dung".

*Distribution*: INDIA: Uttar Pradesh (Dudhwa National Park) and West Bengal.

### 2. *Paederus birmanus* Fauvel. (Fig. 2)

1895. *Paederus birmanus* Fauvel, *Rev. d'Ent.* **14**: 233.

1931. *Paederus birmanus* Cameron: *The Fauna of British India, incl. Ceylon & Burma* (Col.: Staphylinidae) **2**: 46-47.

1995. *Paederus birmanus* Biswas & Biswas, *Zoological Survey of India, State Fauna Series 3, Fauna of West Bengal*, part 6(A): 274.

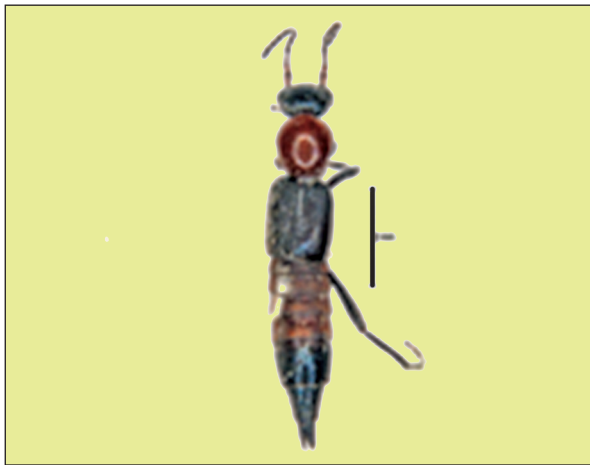


Fig. 2. *Paederus birmanus* Fauv.

*Material examined*: 3 exs, Allahabad dist., Fapamore, 4.ii.2009, V.D. Hegde & Party coll., ex. "bank of river Ganga"; 1 ex., Allahabad dist., Ramghat, 3.ii.2009, V.D. Hegde & Party coll, ex. "Under leaf litter."

*Distribution*: INDIA: Uttar Pradesh (Allahabad – Fapamore, Ramghat ) Uttarakhand and Nagaland. *Elsewhere*: Myanmar.

### 3. *Paederus pubescens* Cameron (Fig. 3)

1914. *Paederus pubescens* Cameron, *Trans. Ent. Soc. Lond.*: 539.

1931. *Paederus pubescens* Cameron, *The fauna of British India, inc. Ceylon & Burma* (Col : Staphylinidae), **2**: 44-45.

1995. *Paederus pubescens* Biswas & Biswas, *Zoological Survey of India, State Fauna Series 3, Fauna of West Bengal*, part 6(A): 274.



Fig. 3. *Paederus pubescens* Cam.

*Material examined*: 10 exs., Allahabad dist., Fapamore, 4.ii.2009, V.D. Hegde & Party coll, ex., "bank of Ganga."; 7 exs., Allahabad dist., Ramghat, 3.x.2009, V.D. Hegde & Party coll, "Under leaf litter."

*Distribution*: INDIA: Uttar Pradesh (Allahabad – Fapamore, Ramghat ), West Bengal and Assam. *Elsewhere*: Bangladesh and Pakistan.

### 4. *Paederus nigricornis* Bernhauer (Fig. 4)

1911. *Paederus nigricornis* Bernhauer, *Ent. Blatt.*, **7**: 61.

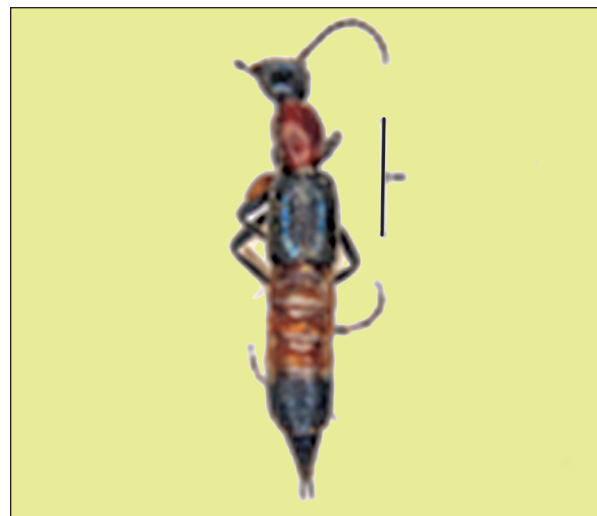


Fig. 4. *Paederus nigricornis* Bernh.

1931. *Paederus nigricornis* Cameron, *The Fauna of British India, incl. Ceylon & Burma* (Col : Staphylinidae), **2**: 47-48.

1995. *Paederus nigricornis* Biswas & Biswas, *Zoological Survey of India, State Fauna Series 3, Fauna of West Bengal*, part 6(A): 273.

*Material examined:* 2 exs., Allahabad, Ramghat, 3.xi.2009, Dr. V.D. Hegde & Party coll, ex., "Under leaf litter."

*Distribution:* INDIA: Uttar Pradesh (Allahabad-Ramghat) Uttarakhand, Sikkim, Himachal Pradesh and West Bengal. *Elsewhere:* Nepal.

#### 5. *Paederus fuscipes* Curtis (Fig. 5)

1823. *Paederus fuscipes* Curtis, *Ent. Brit.*, 3: 108.

1931. *Paederus fuscipes*: Cameron; *The Fauna of British India, incl. Ceylon & Burma (Col.: Staphylinidae)* 2: 40-41.



Fig. 5. *Paederus fuscipes* Curt.

1995. *Paederus fuscipes* Biswas & Biswas, *Zoological Survey of India, State Fauna Series 3, Fauna of West Bengal*, part 6 (A): 274-275.

*Material examined:* 5 exs., Rampur dist., bank of Kosi river, 4.xi.2007, P. Mukkopadhyaya & Party coll, exs., "river bed of Kosi"; 3exs, Ballia dist, bank of river Ganga, 13.ii,2009, V.D. Hegde & Party coll, ex., "soil on river bed of Ganga"; 3 exs., Mirzapur dist., Pataulighat, 7.ii.2009, V.D. Hegde & Party coll, ex., "river bed of Ganga."; 1 ex., Allahabad dist., Ramghat, 3.ii.2009, V.D. Hegde & Party coll. Ex." Under leaf litter."

*Distribution:* INDIA: Uttar Pradesh (Rampur, Ballia, Mirzapur, Allahabad), Uttarakhand, Bihar, Karnataka, Madhya Pradesh, West Bengal, Meghalaya and Tripura.

### SUMMARY

All the 5 species collected from Uttar Pradesh are new record to the State, Since all the rove beetles collected either from cow dung or under leaf litter or from the paddy field all are soil associated beetles.

### ACKNOWLEDGEMENTS

The authors are grateful to the Director, Zoological Survey of India, Kolkata for providing necessary facilities. Thanks are also due to Dr. Kailash Chandra, Scientist-"F", and O/C Entomology Division for encouragement and suggestion.

### REFERENCES

- Bernhauer, M.1915. Zur Staphyliniden Fauna des Indo Malayischen Gebietes, insbesondere des Himalaya, *Coleopterologische Rundschau*, 4: 49-50.
- Biswas, D.N. and Sengupta, T. 1995. Insecta: Coleoptera.Staphylinidae. *Zool.Surv. India, Fauna of West Bengal, State Fauna Series*, 3 (Part 6A): 201-361.
- Biswas, D.N. 2003. Coleoptera: Staphylinidae, *Zool. Surv. India, Fauna of Sikkim, State Fauna Series*, 9(Part 3): 237-281.
- Cameron, M. 1931. *The Fauna of British India including Ceylon and Burma*, Coleoptera: Staphylinidae, Vol.-II, London, iii+257pp., 2pl.
- Fauvel, A. 1895. Staphylinides nouveaux de l'Inde et de la Malaisie. *Rev.d'Ent. Caen*, 14:180-286.
- Motschulskey, V. 1858. Enumeration desnouvell esespeces de Coleopteres rapports de ses voyages (Continuation). *Bull. de la SocieteImperiale des naturalists de Moscou*, 31(2): 634-670.

A. SAR AND V.D. HEGDE

Zoological Survey of India, M-Block, New Alipore, Kolkata 700 053  
Corresponding Author: Smt. Abha Sar, E-mail: abhasar@gmail.com