

yellowish brown, $13.5 \times 8\mu$. Spores rounded, deep brown, granulate, upto 12

Specimen examined : NORTH WESTERN HIMALAYA : below Mussoorie, 1200-2000 m, 12.9.1895. *Duthie* s.n. (CAL).

ACKNOWLEDGEMENT

The authors are highly thankful to the Director, Botanical Survey of India, Calcutta, for providing necessary facilities and encouragement.

MOHD. NEHAL AZIZ

Botanical Survey of India, Howrah

AND

J. N. VOHRA

Botanical Survey of India, Dehra Dun

REFERENCES

- CHEN, P. C. Studien über die Ostasiatischen Arten der Pottiaceae. I. Hedwigia. 80 : 59. 1941.
DIXON, H. N. *Hymenostylium xanthocarpum* (Hook.) Brid. Bryologist. 30.(6) : 106-109, 1927.
GANGULEE, H. C. Mosses of Eastern India and Adjacent Regions, Fasc. 3 : 646-648. 1972.
HOOKER, W. J. Musci Exotici. Vol. II. 1820.

A NEW SPECIES OF *ANOECTANGIUM* SCHWAEGR. (MUSCI) FROM INDIA

While working on the family Pottiaceae of India, the authors came across two herbarium specimens : *Kurz* 2095 from Sikkim named as *Anoectangium thomsonii* Mitt. and *R. S. Rao* 13958 from Nepal named as *Gymnostomum aeruginosum* Sm. The former has been reported as such by Gangulee (1972). A closer examination revealed that these two specimens represented a distinct taxon altogether different from hitherto described species of *Anoectangium* Schwaegr. It is close to *A. thomsonii* Mitt. (Type : SIKKIM, Lachen, 3000 m, *Hooker* 2011, CAL) but differs in longer, slender, laxly foliate stems. Leaves on drying curled and hooked at tips and not crispate from a broader semi-sheathing base suddenly contracted into a lanceolate to linear-lanceolate lamina and margin at base crenulate.

In this note this species is described and illustrated.

***Anoectangium sikkimense* Aziz & Vohra sp. nov.**

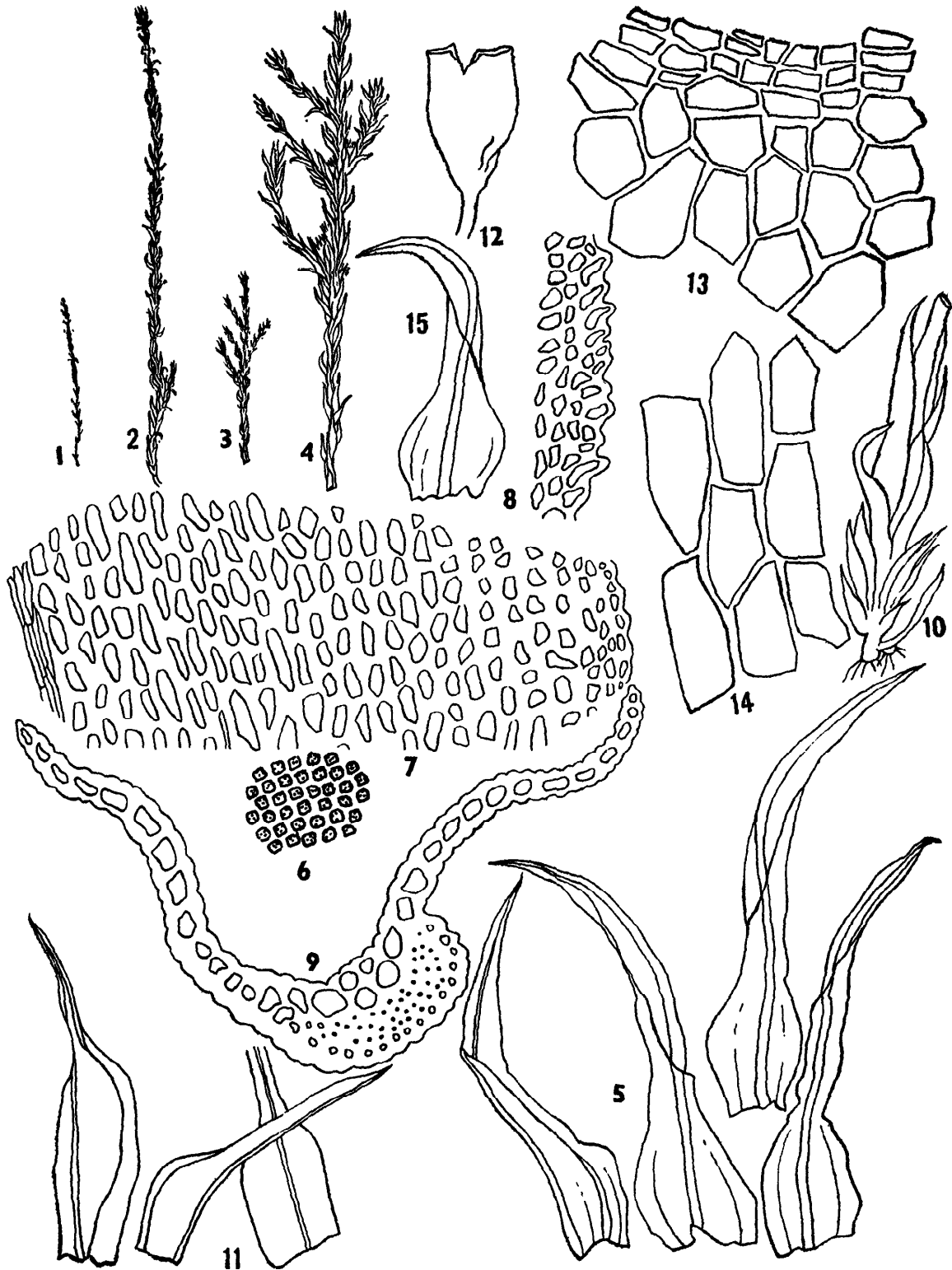
A. thomsonii Mitt. proxima, sed differt caulibus longioribus gracilibus laxe foliatus, foliis in sicco crispatis apicibus uncinatisque,

a basibus latioribus. Semivaginatibus abrupte contractis in laminis lanceolatis ad lineari-lanceolatis, ad marginem in basaliter crenulatis.

Holotypus lectus a kurz sub numero 2095 ad locum Sikkim Himalaya Sinchul, et positus in CAL.

***Anoectangium sikkimense* Aziz & Vohra sp. nov.**

Plants robust, in dense tufts, pale green to green above, brownish green below. Stems erect, radiculose at base, 2.5-4 cm tall, 3 mm wide with leaves, reddish brown, simple or branched, branches monopodial, sometimes fastigiate, 0.5-2.5 cm long, Rounded-triangular in T.S., Central strand present, hyalodermis undifferentiated. Leaves when dry curled below, flexuose to crisped above, when moist erect-spreading, 1-1.75 mm long, 0.17-0.2 mm wide in the middle, upto 0.38 mm wide at base, canaliculate, from a wide, concave, semi-sheathing base abruptly contracted into a lanceolate to linear-lanceolate lamina, apex sharply pointed, margin entire above, at base crenulate, \pm striate at base on both sides of the nerve. Cells ca quadrate,



Anoeclangium sikkimense Aziz & Vohra

1. Dry plant $\times 1$; 2. Dry plant $\times 2$; 3. Wet plant $\times 1$; 4. Wet plant $\times 2$; 5. & 15. Leaves $\times 28$; 6. Laminal cells $\times 350$; 7. Basal cells $\times 350$; 8. Marginal cells of leaf base showing marginal crenulation $\times 350$; 9. T. S. of leaf $\times 350$; 10. Perichaetial bracts with setae $\times 28$; 11. Perichaetial bracts $\times 35$; 12. Capsule $\times 15$; 13. Exothecial cells at the mouth of the urn & immediately below $\times 350$; 14. Exothecial cells in the middle of the capsule $\times 350$.

highly obscure, strongly incrassate, chlorophyllose, 5μ wide, minutely papillose; basal cells rectangular to sub-rectangular, 8μ wide, towards margin *ca* quadrate, $5-6\mu$. Costa stout, reddish brown in the lower $2/3$ portion, yellowish-green above, smooth at back, 45μ wide near the base, extending beyond the apex into a short mucro.

Dioicous. Perichaetial leaves lateral, numerous, spreading, 0.9 mm long, 0.25 mm wide at base, from a wide oblong sheathing base abruptly narrowing into linear limb, margin entire, plane, at base crenulate, crenulation much pronounced on the shoulder, apex acute. Costa ending below the apex to percurrent. Seta erect, dark brown, dextrorse above, 0.8-1.5 cm long. Capsule golden brown in colour, erect, 1.2 mm long, 0.5 mm in diameter, with a short but distinct apophysis. Exothecial cells incrassate, 2-3 rows at the mouth of the urn horizontally elongate, golden brown, $24.8 \times 8\mu$; near mouth hexagonal, golden, $20 \times 18\mu$; in the middle elon-

gated, hexagonal or rectangular, pale yellow, $54 \times 22\mu$. Spores not seen.

Type : India : Sikkim Himalaya : Sinchul, Kurz 2095 (Holotype, CAL). Nepal : Namcha bazar, 4000 m, 16.5.1958. R. S. Rao 13958 (Paratype CAL).

ACKNOWLEDGEMENTS

The authors are highly thankful to the Director, Botanical Survey of India for providing necessary facilities and encouragement and to Prof. H. C. Gangulee for his comments. They are also thankful to Dr. N. C. Majumdar for rendering the latin diagnosis.

MOHD. NEHAL AZIZ

Botanical Survey of India, Howrah
AND

J. N. VOHRA

Botanical Survey of India, Dehra Dun

REFERENCE

GANGULEE, H. C. : Mosses of Eastern India and Adjacent Regions, Fasc. 3 : 635-636. 1972.